

EASTERN PORTLAND INFILL SITE

A FAMILY'S DREAM HOME! Close to town without the usual sacrifices.

This community of homes focuses on family features, larger floor plans, private yards, common open space, convenient parking and storage while promoting first cost affordability through appropriate density, conventional construction and lower life cycle costs through energy efficient design, day lighting and renewable onsite energy. The special features of this development include:

- Generous Shared Court - a safe play area for activities better served by hardscape
- Common Green - a safe play area for activities best accomplished on grass. This area also serves as part of the rain water management system
- Covered Arcade - a sheltered common area for socializing, playing and connecting to the greater community
- Green Entry Courts - a transitional space from public to private
- Private Yard or Deck - a contained and private outdoor space for family use for each home
- Flex Room - art studio, office, or multigenerational living space

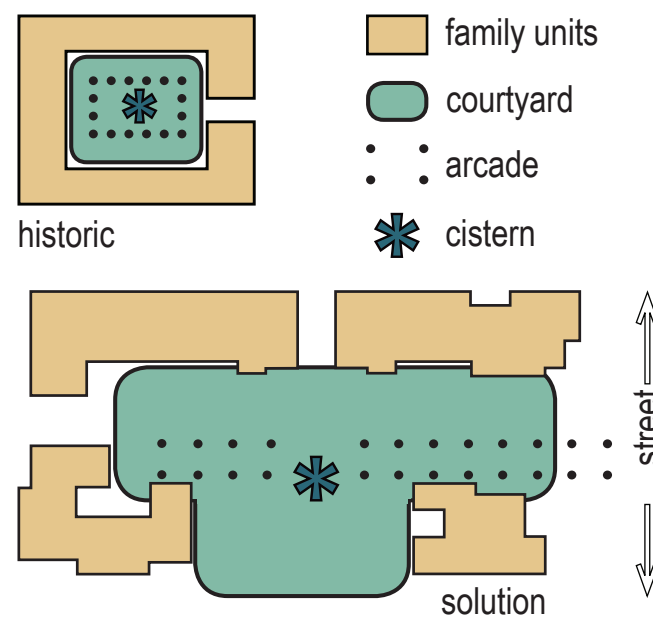
PROJECT DATA

40% Lot Coverage

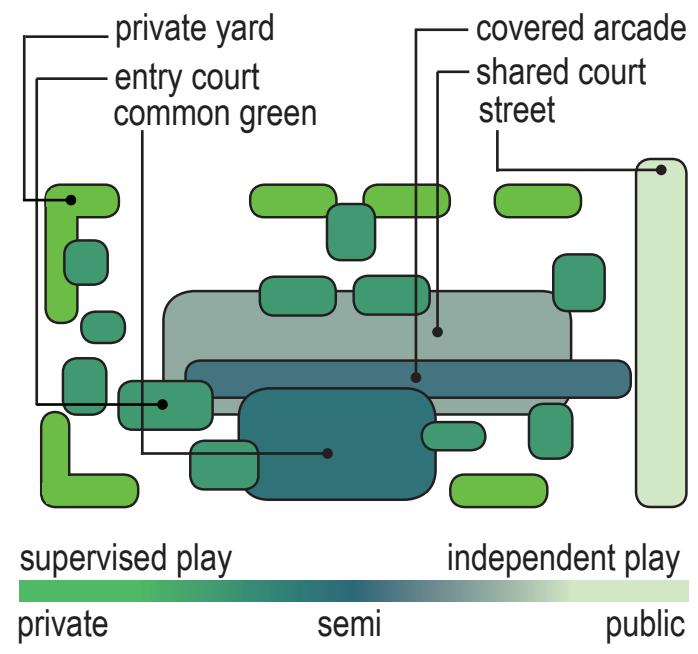
Maximum Ht = 33 ft
No. of Units = 7

Unit A: 1522 SF
Unit B/ Br: 1561 SF
Unit C: 1577 SF
Unit D/ Dr: 1903 SF
Unit E: 1583 SF

Total 8146 SF
(Includes garage)



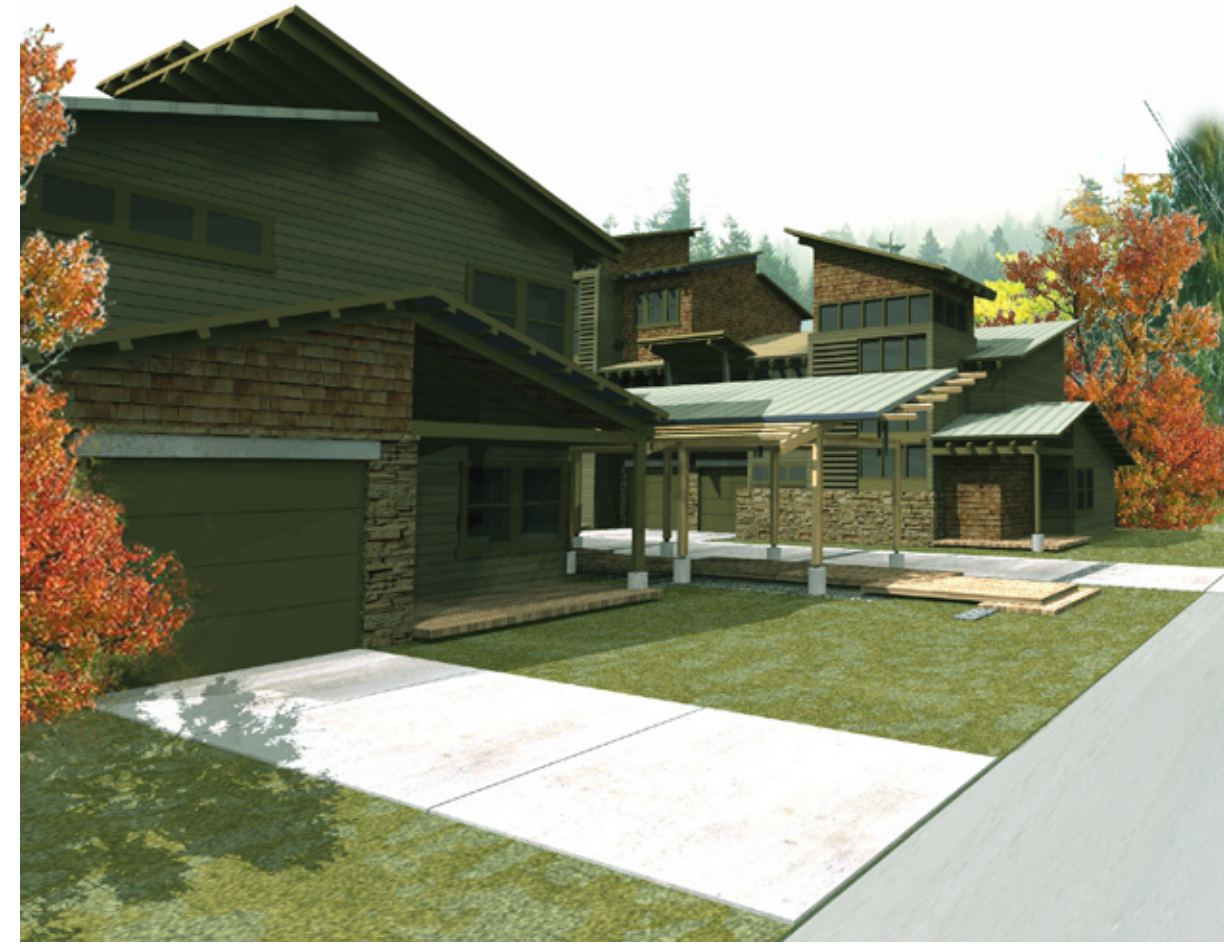
COURTYARD RE-DEFINED



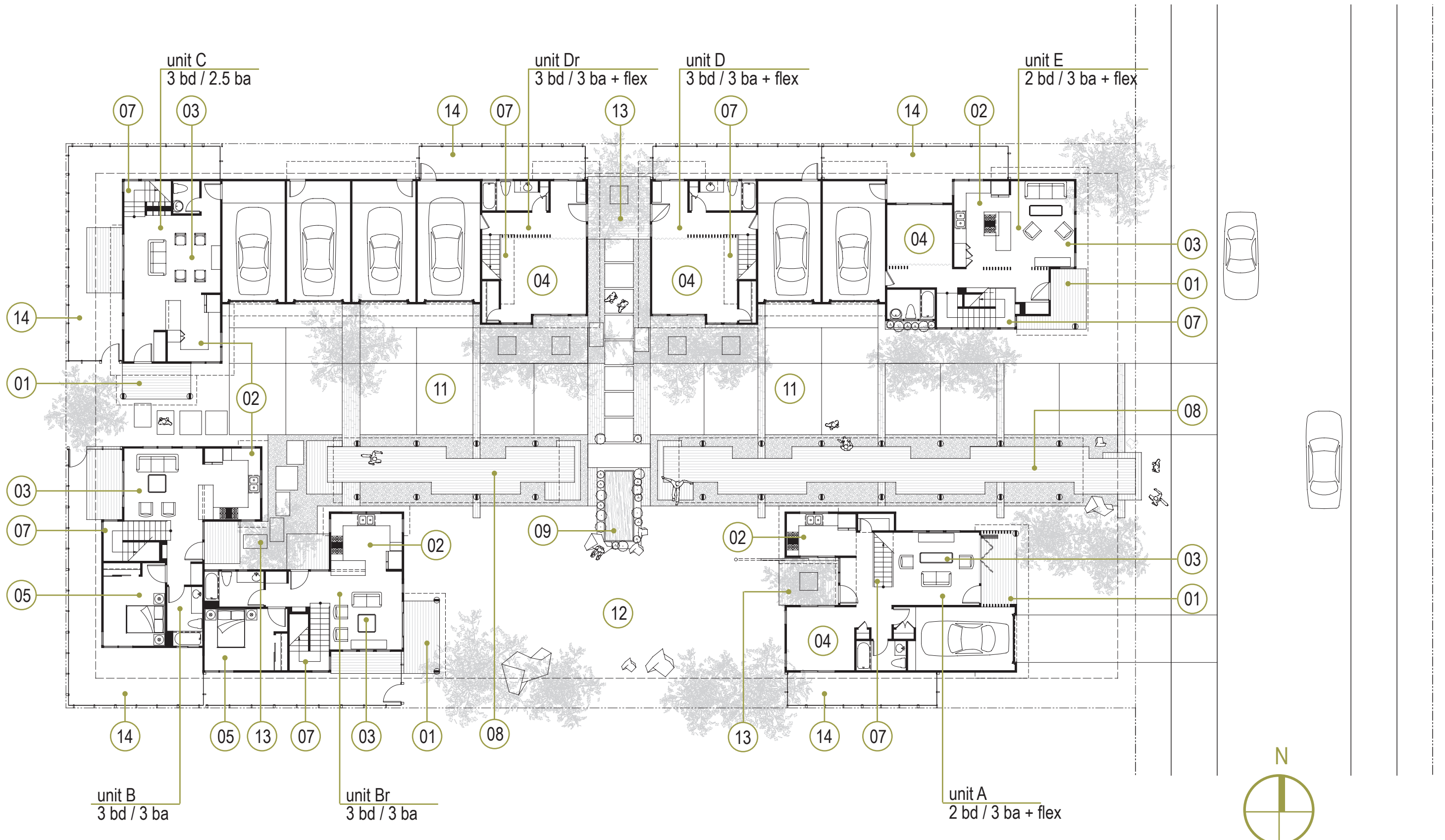
FAMILY FRIENDLY FEATURES - OPEN SPACE



COURTYARD VIEW LOOKING NORTH



STREET VIEW LOOKING NORTH



SITE PLAN AND FIRST FLOOR PLAN
1/16"=1' 0 16